

MONTHLY MEMBERSHIP PROGRESS REPORT

LOCATION REP OF SOUTH AFRICA

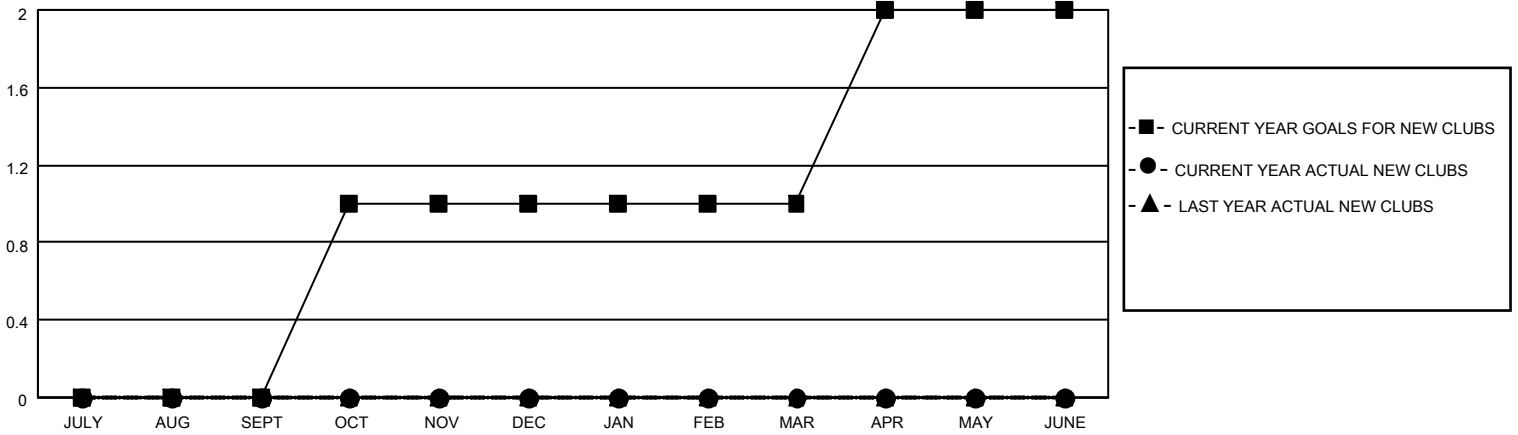
District 410 E

Results as of: 2/28/2023

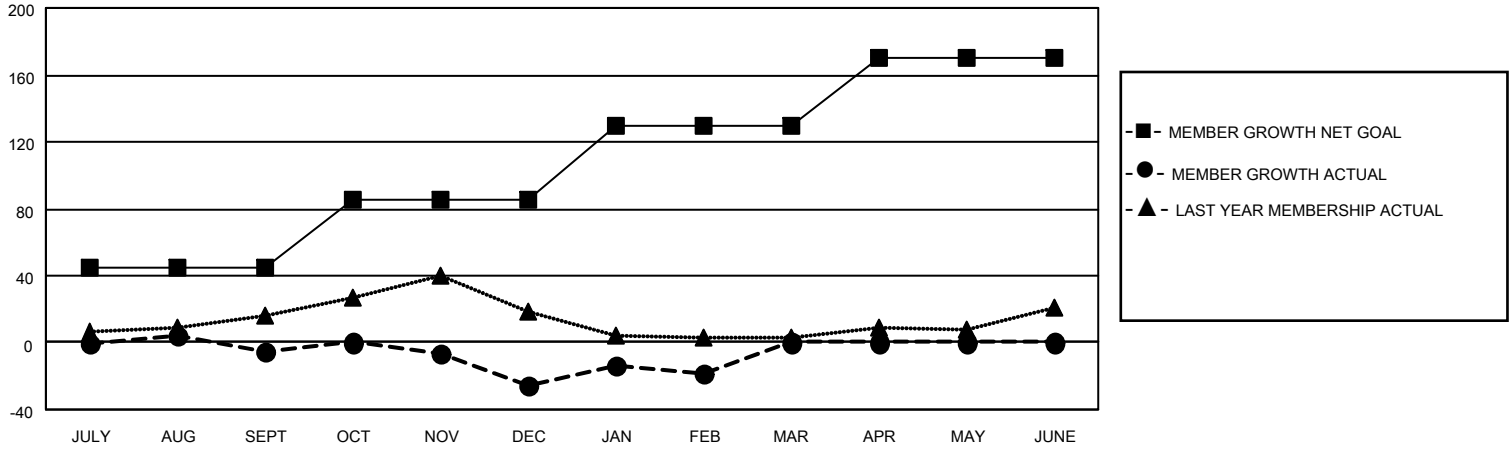
Clubs			
RESULTS FOR 2022-2023			
QUARTER	NEW CLUB GOAL	NEW CLUBS	DROPPED CLUBS
JULY/AUG/SEPT	0	0	0
OCT/NOV/DEC	1	0	0
JAN/FEB/MAR	0	0	0
APR/MAY/JUNE	1	0	0

Members			
RESULTS FOR 2022-2023			
QUARTER	MEMBER GROWTH NET GOAL	MEMBER GROWTH ACTUAL	DROPPED MEMBERS ACTUAL (including transfers)
JULY/AUG/SEPT	45	30	28
OCT/NOV/DEC	40	34	48
JAN/FEB/MAR	45	31	22
APR/MAY/JUNE	40	0	0

GOALS AND ACTUAL NEW CLUBS CUMULATIVE



GOALS AND ACTUAL MEMBERS CUMULATIVE



DROPPED CLUBS: 0

28 CLUBS OF 66 ADDED 1 OR MORE NEW MEMBERS

GENDER DISTRIBUTION

MALE	497 (50.77%)
FEMALE	482 (49.23%)
NON BINARY	0 (0.00%)
PREFER NOT TO ANSWER	0 (0.00%)

DROPPED MEMBERS

[CLICK HERE FOR CUMULATIVE MEMBERSHIP DATA](#)

DECEASED	8
CLUB CANCELLED	0
OTHER	90
TOTAL	98

TOTAL FAMILY UNIT MEMBERS 287

FAMILY MEMBERS PAYING HALF DUES 148